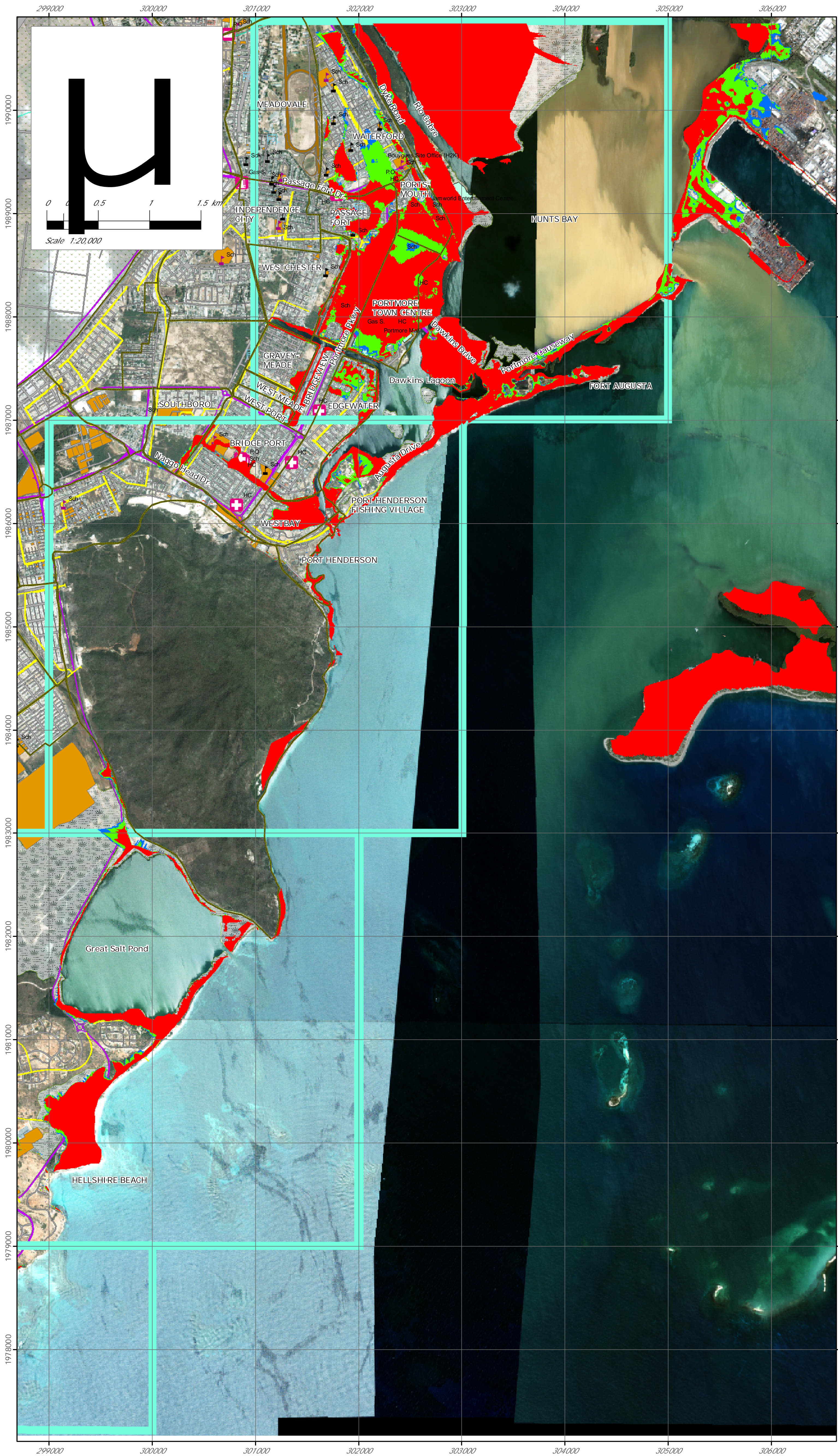


HAZARD MAP
STORM SURGE IMPACT ZONES
COMPARED STORM SURGE EVENTS : MASTER SHEET
PORTMORE MUNICIPALITY, JAMAICA

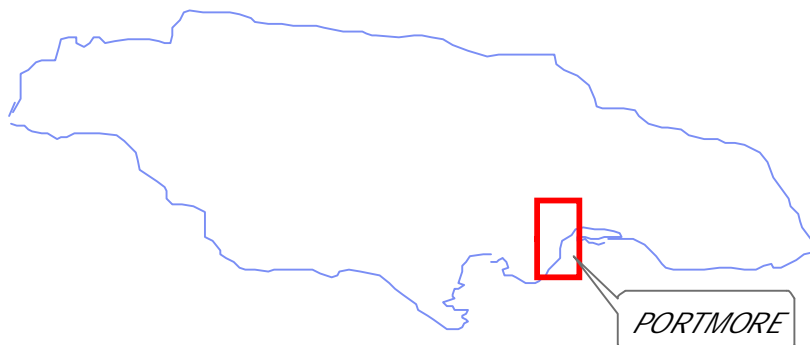


LOCATION MAPS

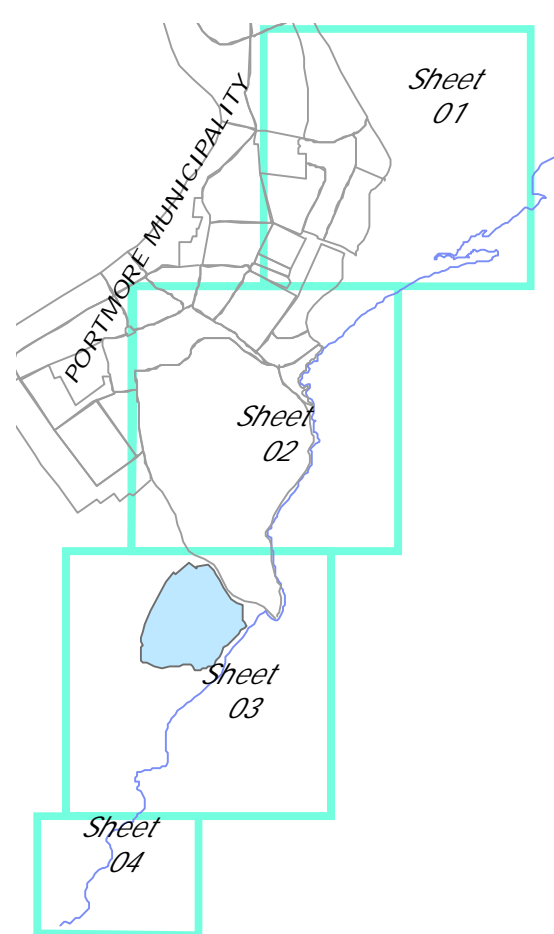
CARIBBEAN



JAMAICA



INDEX TO PORTMORE HAZARD MAP



LEGEND

- Sub-division
- Major Connecting Rds
- Major Roads
- Minor Roads
- 50-yr Event-1.4m
- 100-yr Event-1.55m
- 150-yr Event-1.6m

Return Period T (years)	Static Storm Surge Level (m)
50	1.40
100	1.55
150	1.60

Note:

A flooding event with a Return period of T- years is the flood which is expected to occur on average once every T- years.

Hazard Map Interpretation

. It is recommended that the 150 year storm surge hazard map be used for planning purposes:

. It is recommended that the 50 year storm surge hazard map be used for preparedness measures:

Map Use Limitations

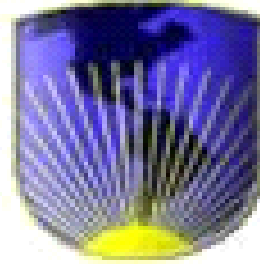
. The accuracy of the topographic data determines the accuracy of the prediction of storm surge extent.

. A buffer zone may be applied to the storm surge extent as a precautionary measure for preparedness purposes.

Map Projection: UTM
Datum: WGS_1984
Units: Meters
Date: Jan., 2007
Author: Smith Warner International Ltd.
Environmental Solutions Ltd.
in association with Mona Informatix Ltd.



Government of
Jamaica



Inter- America
Development Bank

"This Map was prepared to inform the risk assessment being undertaken for Portmore, St. Cathrine, Jamaica. The development of storm surge hazard maps is a collaboration between the Government of Jamaica and the Caribbean Disaster Emergency Response Agency (CDERA) Through its Adaptation for Climate Change and Disaster Mitigation : Township Planning Strategies for Storm surge in the Caribbean Project with the support of the Inter-American Development Bank"