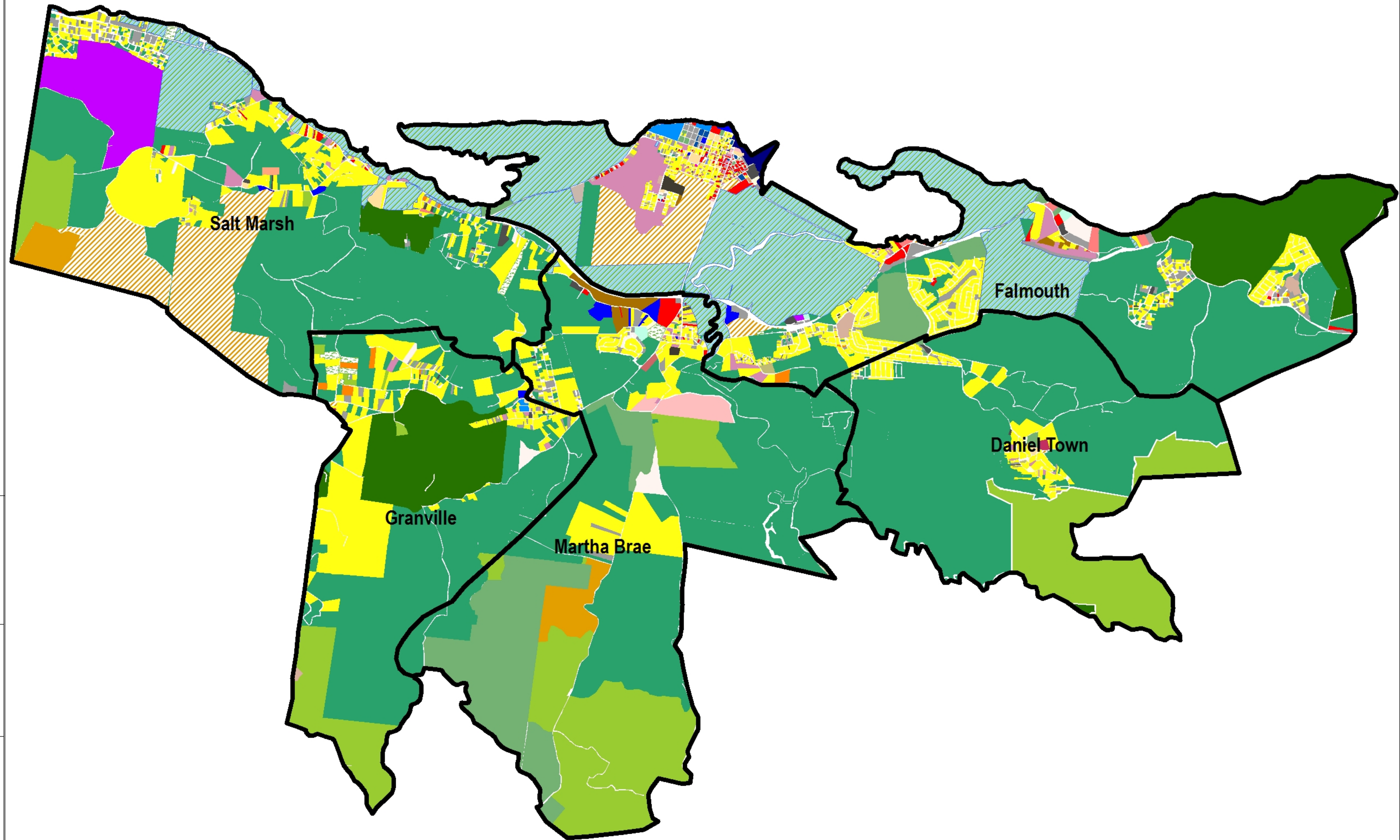


FALMOUTH LOCAL DEVELOPMENT PLANNING AREA EXISTING LAND USE (2016)

Legend

- | | |
|---------------------------|---------------------------------|
| Falmouth LDPA Boundary | Private Parking |
| Land Use Classes | Public Assembly |
| Agriculture | Public Assembly/Public Building |
| Cemetery | Public Building |
| Commercial | Quarry |
| Commercial/Heavy Industry | Recreation |
| Commercial/Office | Residential |
| Derelict Building | Residential/Agriculture |
| Education | Residential/Commercial |
| Education/Public Building | Residential/Education |
| Forestry | Residential/Institution |
| Grassland | Residential/Office |
| Heavy Industry | Residential/Public Assembly |
| Hotel | Residential/Public Building |
| Informal Residential | Under Construction |
| Institution | Utility |
| Light Industry | Vacant Building |
| Mixed Use | Vacant Lot |
| Office | Warehouse |
| Office/Warehouse | Wetland |
| Pasture Land | Woodland |
| Port | |



Prepared by : Project Management Unit
 For : Trelawny Local Sustainable Development Plan
 GIS Planner: Ricardo Williams
 Land Use Planner: Ornella Lewis
 Date Created: July 7, 2016

Coordinate System: JAD 2001
 Projection: Lambert Conformal Conic
 Main Scale: 1: 27,900

Source:
 Trelawny Parish Council
 National Land Agency
 Social Development Commission
 Land Information Council of Jamaica
 National Environment and Planning Agency

Funding Agencies:

